



16 | Studio PKA

PROJECT: 5 ELEMENT HOUSE

FIRM NAME
STUDIO PKA

PRINCIPAL ARCHITECT
PURAN KUMAR

EDUCATIONS / AFFILIATION
BACHELOR OF ARCHITECTURE
IIT ROORKEE, ROORKEE, UTTARAKHAND

BUILT UP AREA
10,000 SQ. FT.

TEAM SIZE
15 PEOPLE

CONTACT
4TH FLOOR, KK CHAMBERS, SIR P.T. MARG, FORT,
MUMBAI - 400001

T: 022-22001212
E: connect@studiopka.com
W: www.studiopka.com

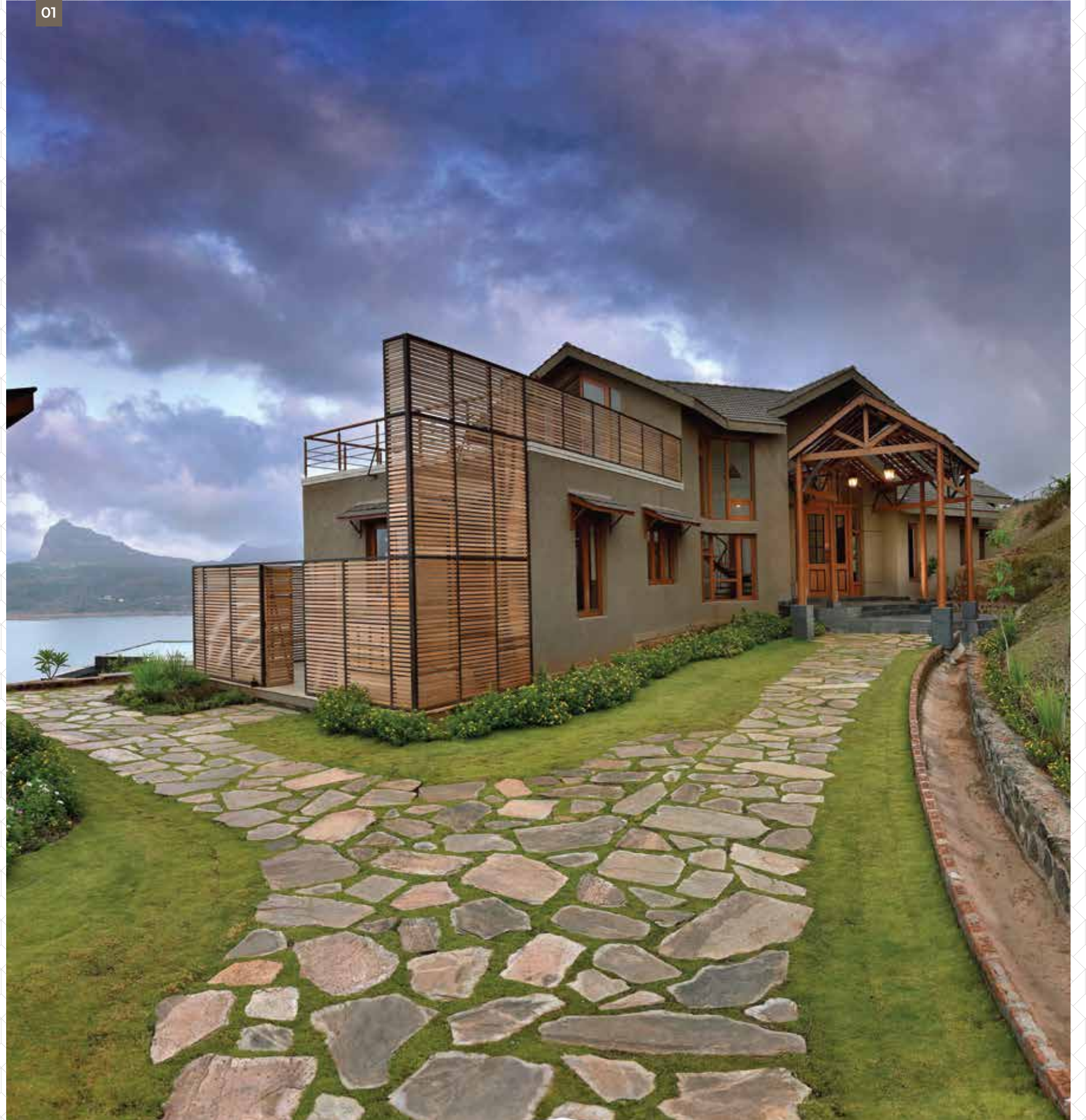
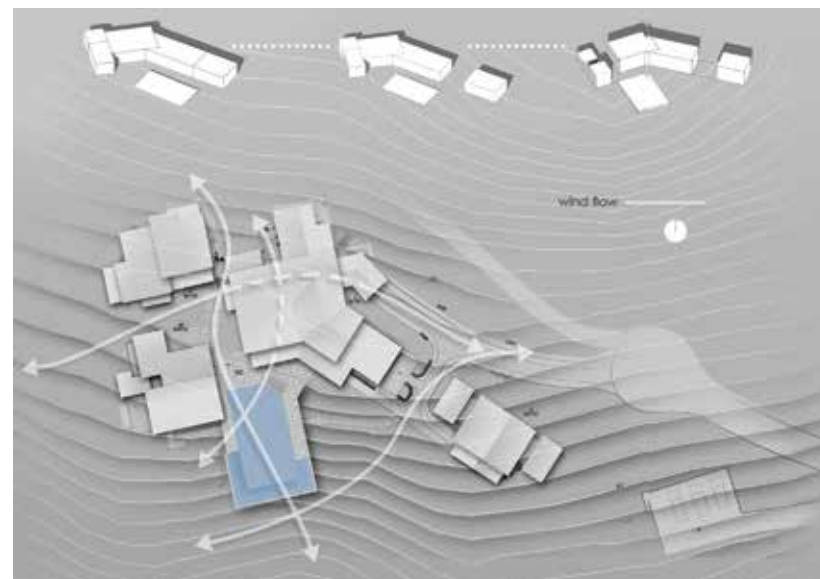
Famous for its captivating vistas, Pavana is as much a getaway as it is a pristine landscape - landlocked by the Sahyadris, crowned and guarded by three forts. The lake, a man-made marvel, held back and contained by a towering dam plays host to a wide gamut of activities throughout the year - an emerging hotspot for tourists and nature lovers alike.

The family of four sought to discover a weekend retreat as well as a reprieve from the bustling life of the city, and hence ventured out in search of a tract of land that would not only capture the essence of the place but could also inspire, delight and satiate their creative endeavors.

A simple and earthy palette of materials and tones - limestone (Shahabad & Kadappa), sandstone, slate, teak wood, terracotta tiles, exposed brick, cement plaster, mild steel - complement and respect the site and its surroundings.

The footprint ensures that the site has been altered to a bare minimum. The form of the design tries to embrace the landscape, creating multiple vantage points from within - making it easy to forget where the house ends and the outside begins. The house continues to respond, adapt and live in harmony with the elements. Spaces were imagined to develop and narrate their own story over time - as the seasons change - in sync with the natural environment.

Conceived as a home for friends as much as it was a home for family, the 5 Element House is a place for celebrating life itself.



5 ELEMENT HOUSE

BUILT UP AREA
10,000 SQ. FT.

A divide between the guest block and the living block acts as a magnet and the true entrance of the house - enticing and pulling the user in, towards the view of the lake and the range.



02 This zone spills out into an informal space towards the pool that ensures the continuity and flow of spaces from the interior to the exterior.

03 The very form of the design tries to embrace the landscape, creating multiple vantage points from within - making it easy to forget where the house ends and the outside begins.

04 The master bedroom looks onto the lake as a direct response to the site - the altitude and the prevailing climatic conditions - currents of wind are allowed to flow through large openings.

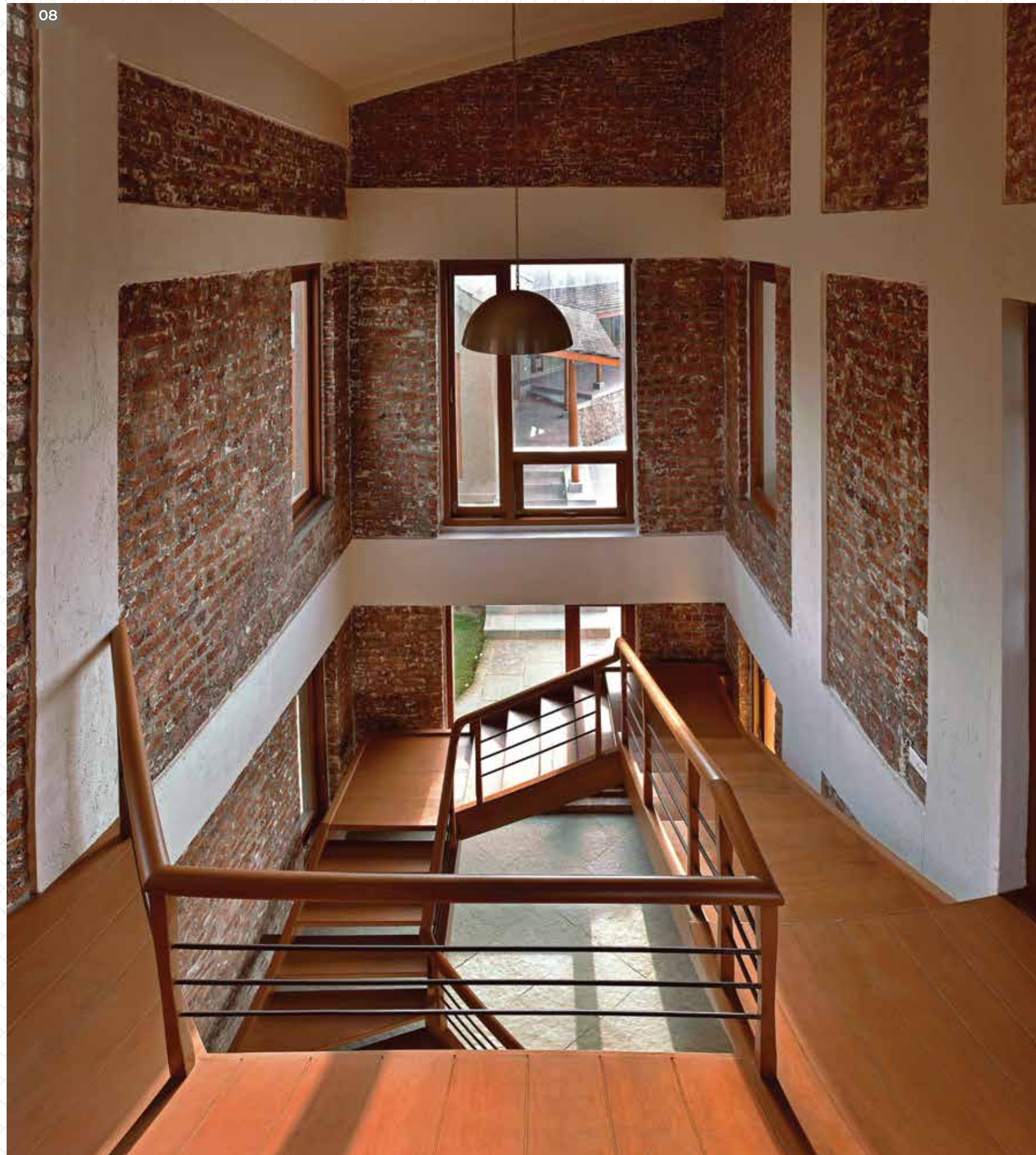


05 A simple and earthy palette of materials and tones - teak wood, terracotta tiles, exposed brick, cement plaster - complement and respect the site and its surroundings.

06 Following the profile of the roofs, large fenestrations bring in daylight and warmth creating a connect with the changing hues of the skies above and a casual reminder of the passage of time.

07 The Dining area looks out towards the swimming pool, allowing light and air to filter in.



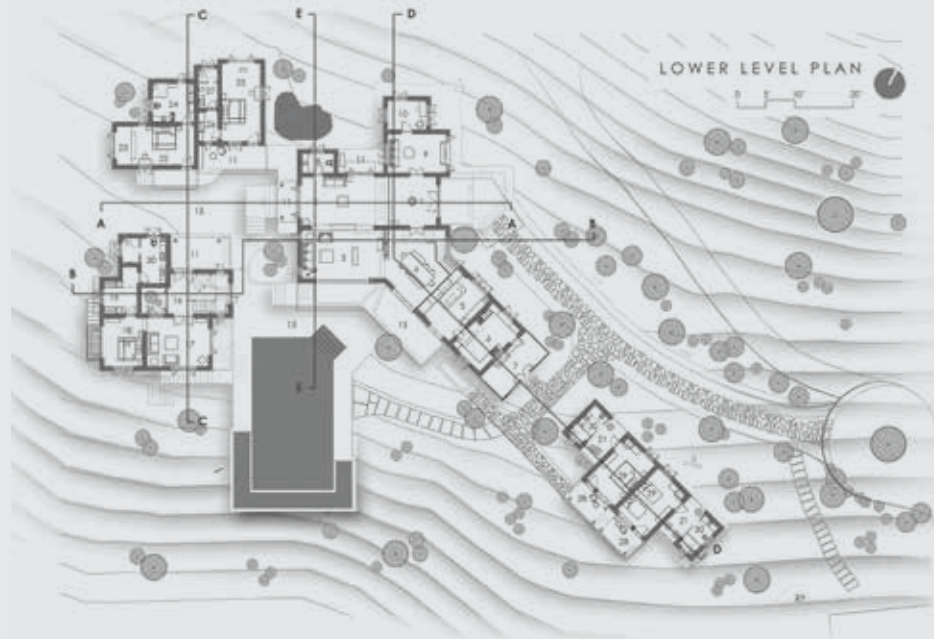


08 In this double heighted space, the structural system of plastered cement and exposed brickwork frames the vantage point through the window.



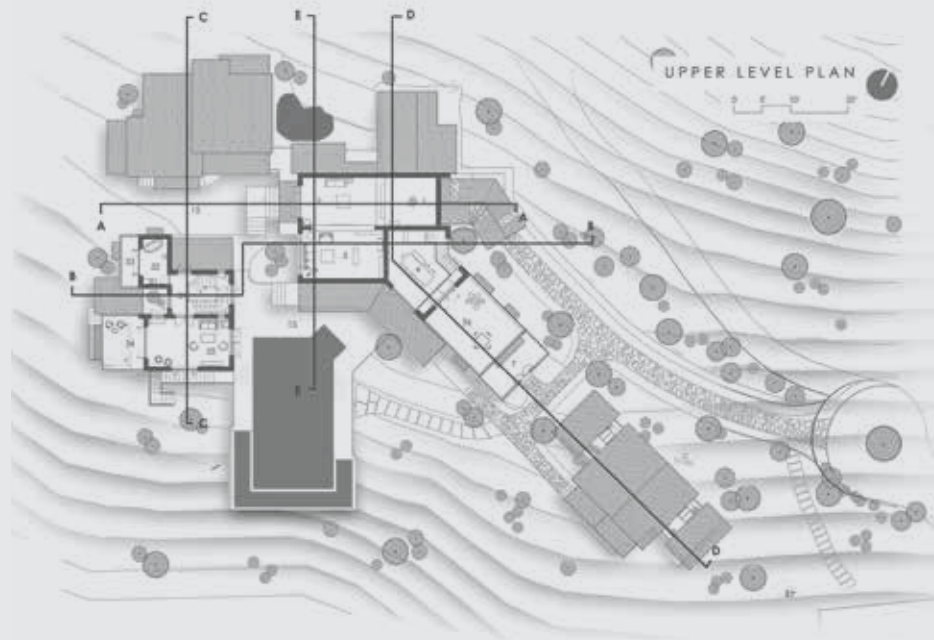
- 09** The edgeless swimming pool, visible from the Living Area, seems to merge and become one with the lake below.
- 10** The fenestrations encapsulate a panoramic view of the lake, establishing a connect between the residents and the elements.
- 11** The dry kitchen is designed as an open kitchen flowing into the dining area to enable the residents to come together and cook.
- 12** The powder room looks out to a lily pond that enhances the micro-climate in and around the area.

FLOOR PLAN



LOWER LEVEL

- 1 ENTRANCE FOYER
- 2 ENTRANCE LOUNGE
- 3 LIVING ROOM
- 4 DINING
- 5 DRY KITCHEN
- 6 WET KITCHEN
- 7 UTILITY
- 8 POWDER ROOM
- 9 PROJECTION ROOM
- 10 EDITING ROOM
- 11 PATIO
- 12 POND
- 13 DECK
- 14 POOL
- 15 THE AANGAN
- 16 FOYER
- 17 LOUNGE
- 18 MASTER BED
- 19 MASTER DRESS
- 20 MASTER BATH21
- COURT
- 22 BEDROOM-1
- 23 PATIO(BEDROOM-1)
- 24 BATH/DRESSING
- 25 BEDROOM-2
- 26 DRESSING
- 27 BATH
- 28 PATIO(GUEST BLOCK)
- 29 GUEST BEDROOM



UPPER LEVEL

- 30 GUEST BATH
- 31 FOYER
- 32 POWDER ROOM
- 33 BALCONY
- 34 DECK
- 35 DEN
- 36 TERRACE

HIGHLIGHTS



ARCHITECTS QUOTE

“ THE HOUSE HAS BEEN DESIGNED OUTSIDE-IN RATHER THAN INSIDE-OUT ”

CHALLENGES

The contour was seen more as an asset than a challenge, which eventually enhanced the design quotient of the house. The portion of the plot was picked specifically for its friendlier slope as opposed to the rest of the site.

INSPIRATIONS

The design evolved as a direct response to the site at hand – the shimmering lake and the resolute Sahyadris in the distance – all the while respecting the requirements of the client.

PRODUCTS / VENDORS

Interior	ASIAN PAINTS - APEX ULTIMA	Beds	CUSTOM
WC	KOHLER	Chairs	CUSTOM
Wash Basin	KOHLER		
Bath Tubs	KOHLER	Ply	NOCTE
CP Fittings	KOHLER	Sinks	FRANKE
Sofas	CUSTOM	Air Conditioning	TOSHIBA
Dining	CUSTOM		

CONSULTANTS / CONTRACTORS

Structural	RANAVAT BUILDCON
Civil	MEHTA ASSOCIATES
Carpentry	JASWANT ENTERPRISES
Electrical	VORA ELECTRICALS
HVAC	ADVENT ENGINEERS
Landscape	OIKOS ECOLOGICAL SOLUTIONS

PROJECT PHOTOGRAPHER

www.panoramas.in | www.sameerchawda.com



AMIT PASRICHA

panoramist@gmail.com
+91 98101 92215



SAMEER CHAWDA

sameerchawda@hotmail.com
+91 98200 00971