



## THAT APARTMENT



### PURAN KUMAR

STUDIO PKA

Puran Kumar - Principal at Studio PKA - believes in creating spaces that exude a strong sense of place and identity. Now 25 years into the practice, Puran continues to explore and adopt fresh, innovative and exciting new ways of breathing life into the wide gamut of projects that come his way.

Established in 1993 as PKA, the design studio is a well-established practice providing complete design solutions in interior-architecture. With corporate interiors as its core strength, the studio has slowly expanded its horizons to designing other spaces as well and has a wide spectrum of projects from corporate to residential including bungalows and villas.

The practice has grown from a small design studio to becoming one of the preferred practices in the industry. Effective space planning, clutter-free designs and precision in time management are the prominent features of each project and have become the hallmark of the studio. With strict processes in place that are followed for each project, the studio has earned a formidable reputation that holds it in great stead.



#### FACT FILE

LOCATION OF PROJECT  
WORLI, MUMBAI

BUILT UP AREA  
2000 SQ.FT

ARCHITECTURE FIRM  
STUDIO PKA

PRINCIPAL ARCHITECT  
PURAN KUMAR

DESIGN TEAM  
SONALI MEHTA  
SHRUTI TODANKAR

CIVIL CONTRACTOR  
MEHTA ASSOCIATES

PHOTO CREDITS  
DEEPSHIKHA JAIN

YEAR OF COMPLETION  
2018

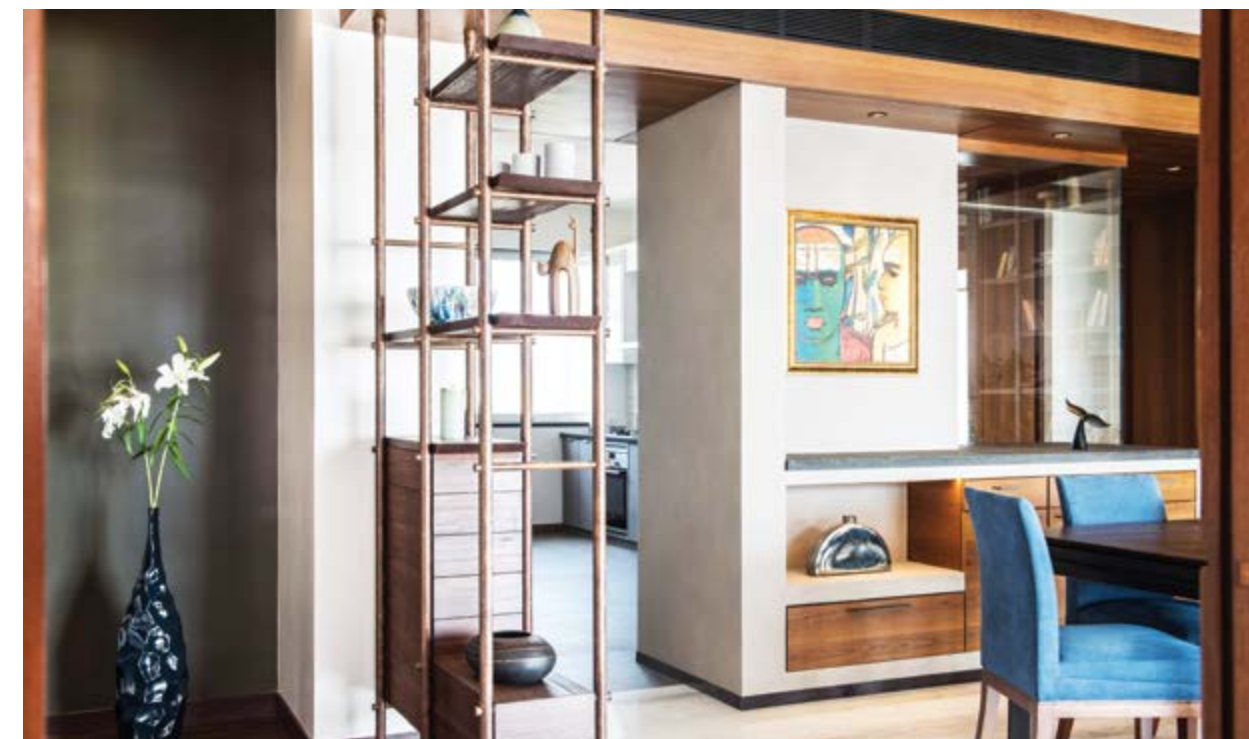
### THAT APARTMENT

Welcomed by the views of an all too familiar sea that never stays the same, the family of four was charmed by the ever-changing hues of the city skies. It echoes back to memories of old when everyday would begin and end at a walk along 'The Seaface'.

Different spaces dance seamlessly between themselves, with the hall at its center. It encompasses the entrance foyer, the living, the dining and a dual-functional private study for contemplation or an eclectic extension to the living experience.

Spaces converse with each other with subtle textural juxtapositions. Every design choice accentuates an unspoken affair between the 'home' inside and the world outside where the seas and skies painted themselves in hues of a setting sun. Hues that the interiors complement and contrast as the day wears on. The changing landscapes beyond the windows bridge the spaces with the shades of light and shadows they cast inside, lighting them up with a singular glow. Glass has been introduced between the kitchen and the living space to let this light percolate further into the apartment.

'That Apartment' is a reflection of their story, a longing to create a space that becomes a part of a familiar dialogue of memories, with every word etched into the very space they now call 'home.'



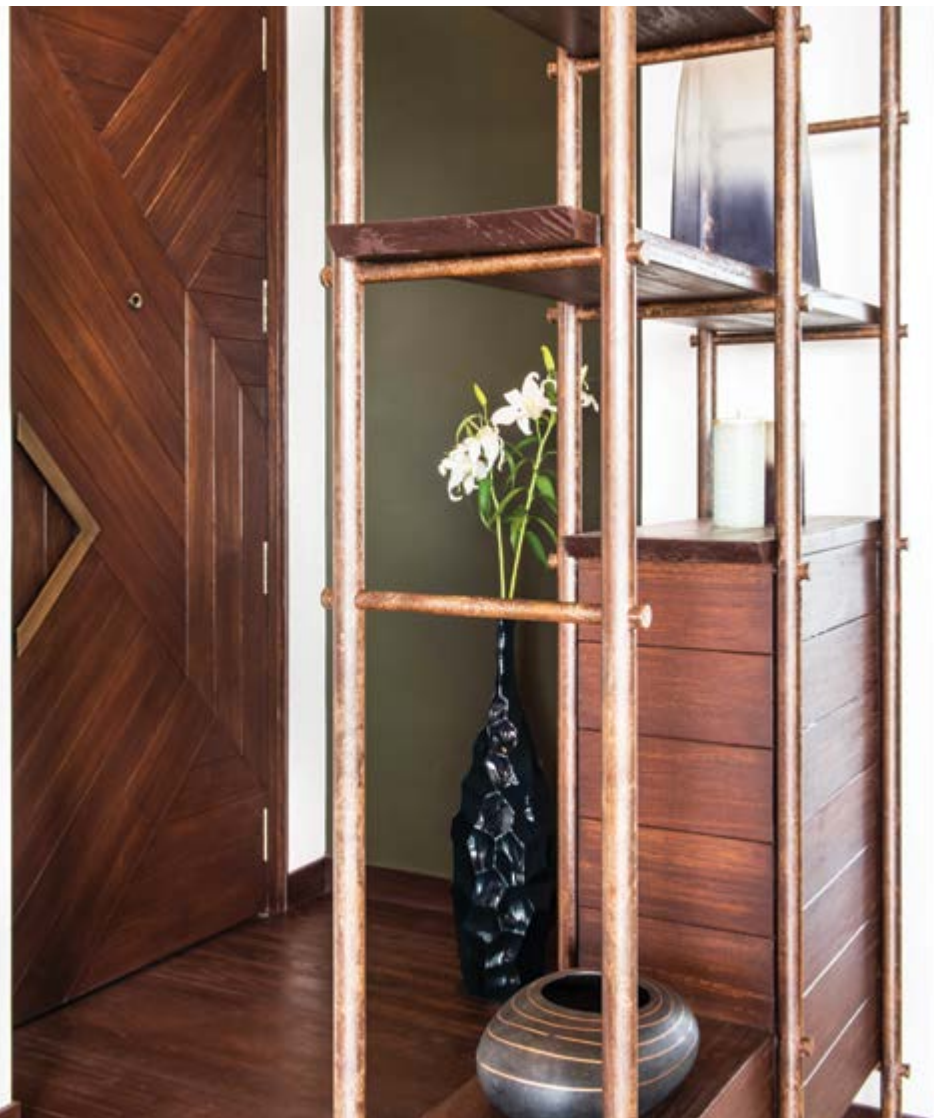
**ABOVE :** KITCHEN AS VIEWED FROM DINING AREA.

**MIDDLE :** BOOKSHELF ADJOINING DINING AREA LOOKING TOWARDS THE LIVING ROOM.

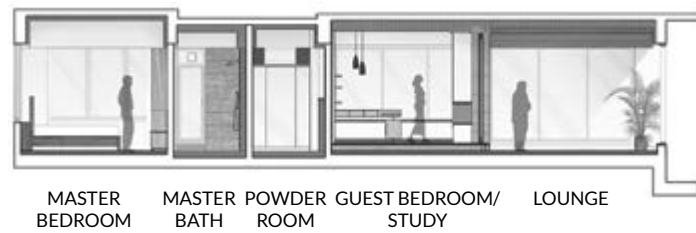
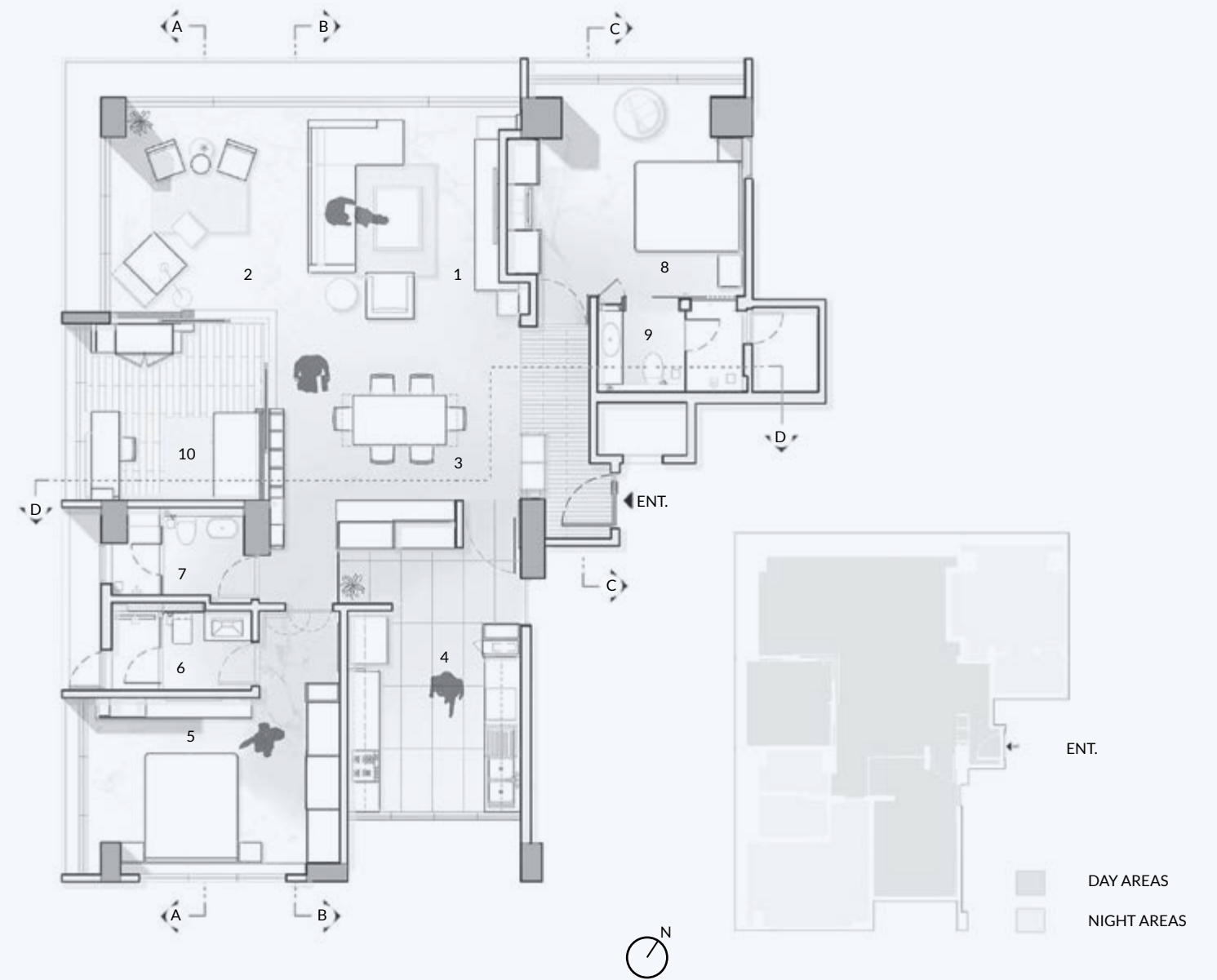
**BELOW :** VIEW OF OPEN KITCHEN AND DINING AREA WITH THE ENTRANCE UNIT ADJOINING IT.

**OPPOSITE ABOVE :** MASTER BEDROOM LIT BY NATURAL LIGHT FROM TWO SIDES.

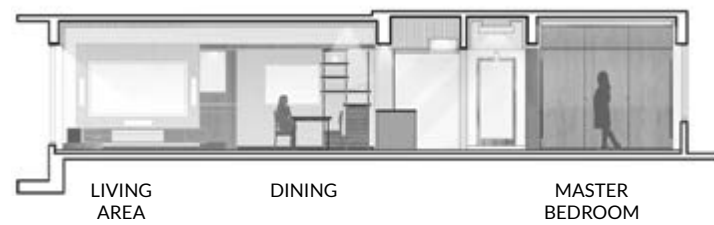
**OPPOSITE BELOW :** VIEW OF BEDROOM.



ABOVE : SMALL REST ROOM OR AREA WITH MARVELOUS SEA VIEW FROM ITS GLASS WINDOWS AND FALSE CEILING WITH WOOD WORK LOOKS ELEGANT, BIG PLANT BETWEEN THE TWO WINDOWS ADDS THE GREEN EFFECT TO THE AMBIENCE.  
OPPOSITE ABOVE LEFT : LOUNGE OVERLOOKING THE SEA ALLOWING IN NATURAL LIGHT AND VENTILATION .  
OPPOSITE ABOVE RIGHT : STUDY AREA WITH AMPLE NATURAL LIGHT THROUGH THE LARGE GLASS WINDOWS.  
OPPOSITE BELOW LEFT : DISPLAY UNIT FILTERING VIEW OF INSIDE FROM THE ENTRANCE DOOR .  
OPPOSITE BELOW RIGHT : BATHROOM WITH COUNTER UNIT IN BRONZE BACK PAINTED GLASS.



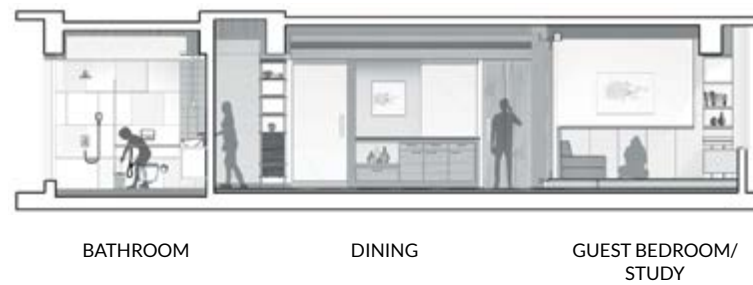
SECTION AA



SECTION BB



SECTION CC



SECTION DD

**LEGEND**

- 1. LIVING
- 2. LOUNGE
- 3. DINING
- 4. KITCHEN
- 5. MASTER BEDROOM
- 6. MASTER BATHROOM
- 7. POWDER ROOM
- 8. BEDROOM
- 9. BATHROOM
- 10. GUEST BEDROOM / STUDY

**MATERIAL SPECIFICATIONS**

FLOORING NOT SPECIFIED	BATH FIXTURES NOT SPECIFIED
WALL CLADDING NOT SPECIFIED	FURNITURE & DÉCOR NOT SPECIFIED
INTERIOR FINISHES NOT SPECIFIED	SOFT FURNISHINGS NOT SPECIFIED
LIGHT FIXTURES NOT SPECIFIED	
KITCHEN NOT SPECIFIED	

ABOVE: PLAN

OPPOSITE ABOVE: DINING AREA WITH BOOKSHELF ADJOINING THE STUDY AND LOUNGE AREA WHICH OVERLOOK THE SEA.

OPPOSITE BELOW: SECTION