

# Project Awas

## Studio PKA

*The design traces the lie of the land and the natural water body to develop an enriching representational dimension for an art village and an artist's residence. A bipartite plan emerges as a consequence, engaging the highest point and lowest in an embrace, creating a sense of hierarchy and progression within. Both as a physical and cultural continuity, the architecture extends tactfully outward as street typologies in villages, radiating from a central space, as decks, and as a conceptual principle of a 'bridge'. The architecture is a connection, between the public and private, art and community, community and nature, art and nature and allows for a dualistic approach – self-contained and yet outward looking purview.*





Project Awas is a project in continuation. An idea that found its roots in the mind of a connoisseur of art, and stemmed in the heart of an altruist. The unending insatiable hunt to unearth talent, led to its conception.

A six-acre narrow piece of land in a village called Awas in Alibaug, near Mumbai, forms the base for this idea. An art curator aspires to build an art village, and a home for himself. The site is segregated in two unequal sections by the natural passage of water. While privacy and security require this division, the philanthropist in him calls for the social, visual, and physical "bridge" between the two entities.

As seasons take turn, the site moulds itself to accommodate for the natural flow of water, harvesting it and thereby, making for a cooler microclimate. The bridge, symbolic of one's journey, becomes the physical connect between the two sides - with unbuilt extensions in the form of decks, project themselves towards the water. These decks instigate the instinctive human tendency to move closer to nature.

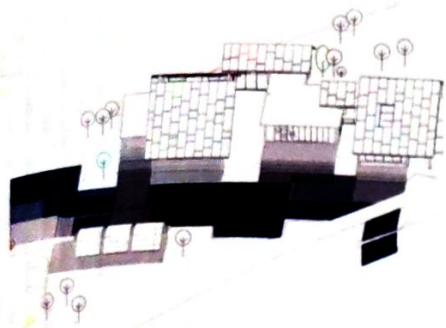
The village of and for artists, is a community bringing creative heads together to explore, experiment, and find their purpose in the field of art. The scattered individual shelters designed with workspaces marking their entrance, encourage communication, motivate their art to initiate conversations and form new relationships. The home, a residence for one, is a dream for many. The subtle grandeur of its artistic nature and the comfort blend in, while intertwining with the green.

The highest point of it all, the Art Gallery, is an independent structure sitting on a pedestal of land that rose with it, and yet, it kneels before the water. The final destination for aspiring artists, it holds their art, mounted and proud, as an exhibition for the world to see.

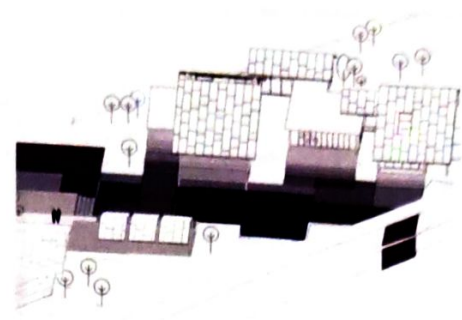
Figure 1 (Previous Page)  
The Residence

Figure 2 (This Page)  
View of the Water

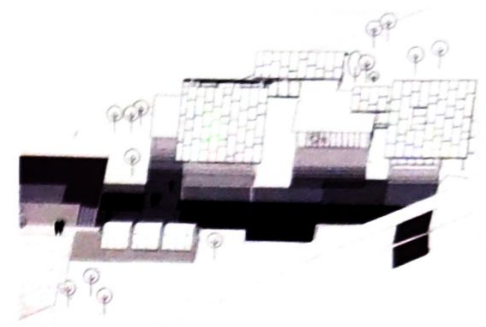
Figure 3 (Facing Page)  
Conceptual Diagram  
Top row: Water Basin  
Middle Row: Water Channel  
Bottom Row: Residence



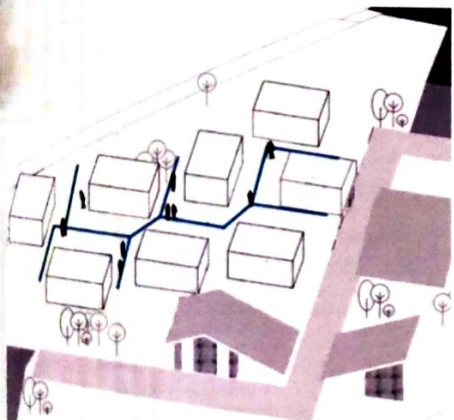
*Submerged decks reducing the connection between village and residential zones*



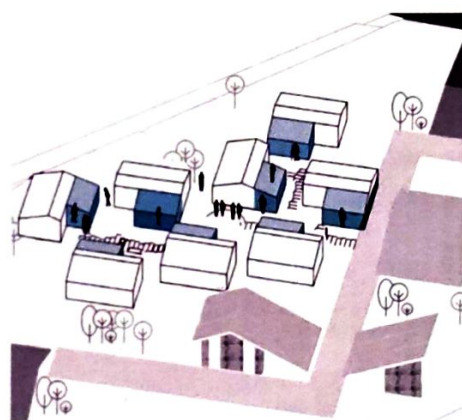
*Decks start getting exposed with the season getting drier*



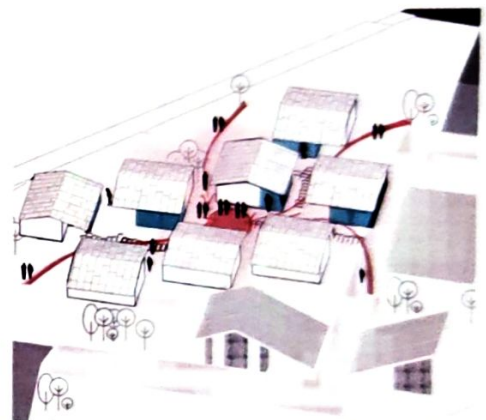
*All the decks get exposed to allow an increased level of interaction*



*Pathway is created similar to the typical street typology of villages*



*The verandah design of typical village house is used to form glass extrusions in every block for painting*



*A central congregation space acts as a gathering space for everyone to use*

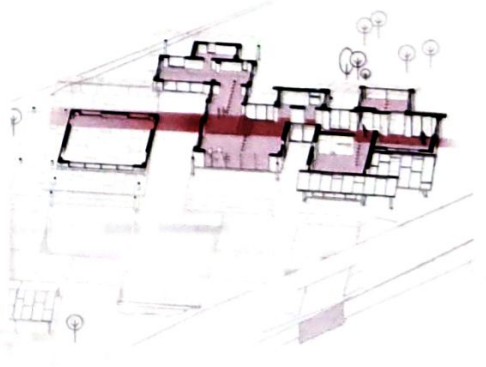
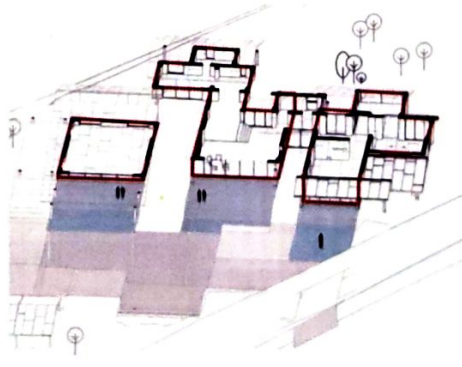




Figure 4 (Above)

Site Plan. Legend:

- 1.Reception, 2.Library, 3.Dining Area,
- 4.Workshop, 5.Art Pavilion, 6.Artists' Village,
- 7.Service Block, 8.The Residence, 9.Art Gallery,
- 10.Parking

Figure 5 (Facing the  
Village entry)

Figure 6 (Back  
Site Plan)

