

**MELIX**  
BOOKS & AWARDS

THE EVOLVED INDIAN AESTHETIC VOLUME-1

# 77 STUNNING INDIAN HOMES

61 APARTMENTS & 16 BUNGALOWS

**A selection of 77 finest homes in India**

curated, compiled & edited by  
Ar. ROOPA SABNIS PINGE

# STUDIO PKA, Mumbai

## Fact File:

Project Size: **2,000 Sq.Ft**

Location: **Mumbai, India**

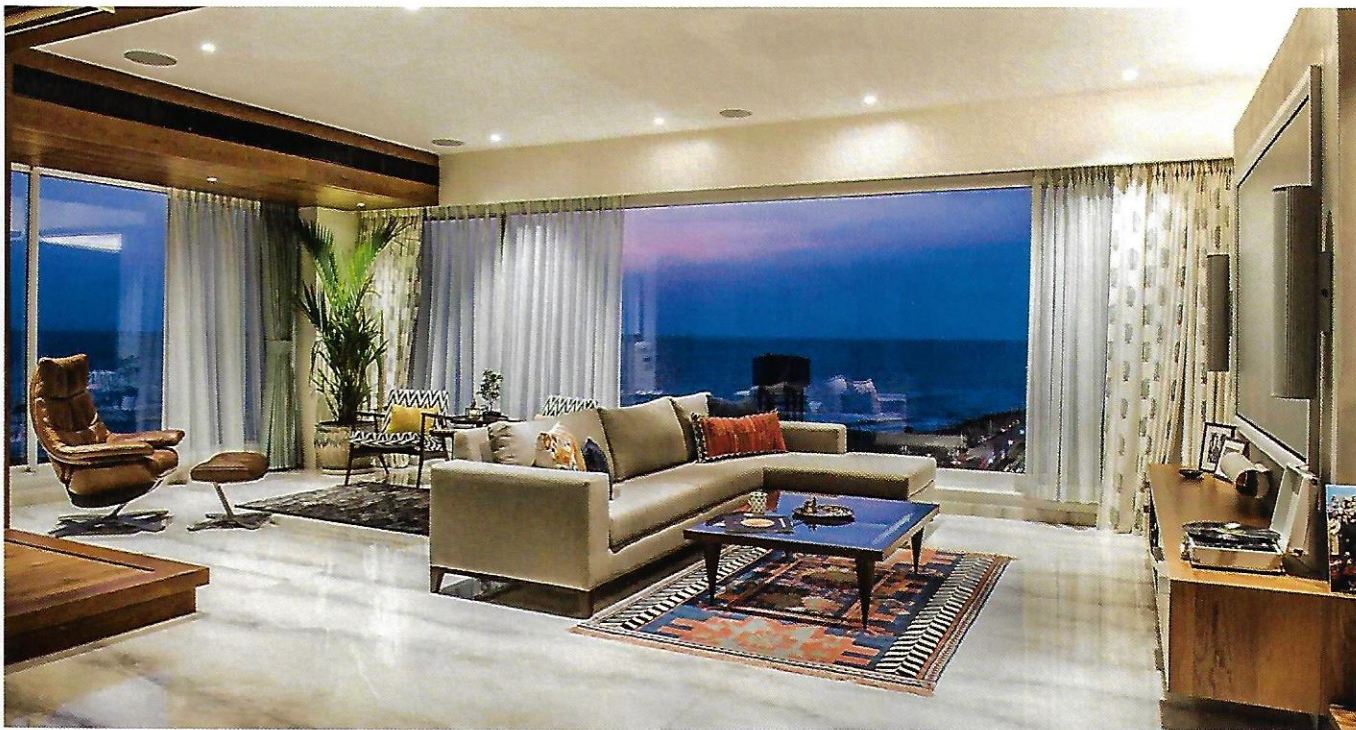
Photographs: **provided by Studio PKA**

This sea-facing apartment for a family of four is presented with views of an ever-changing sea and the glorious hues of the skies. Different interior areas transgress seamlessly, with the hall at its centre. The hall encompasses the entrance foyer, the living and dining area, and a private study which also acts as an eclectic extension of the living space.

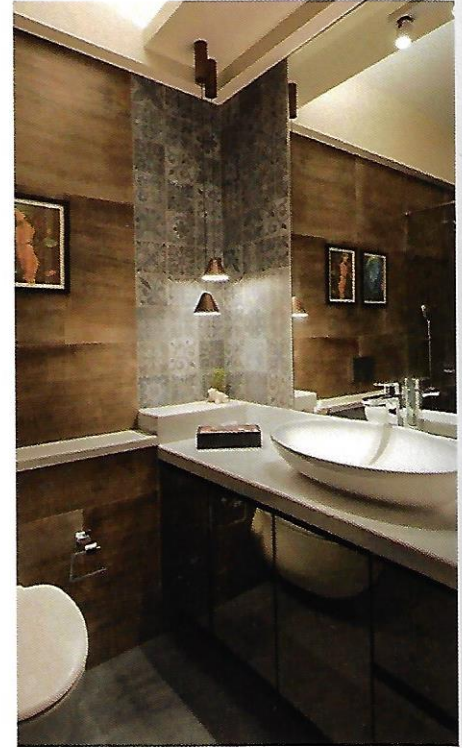
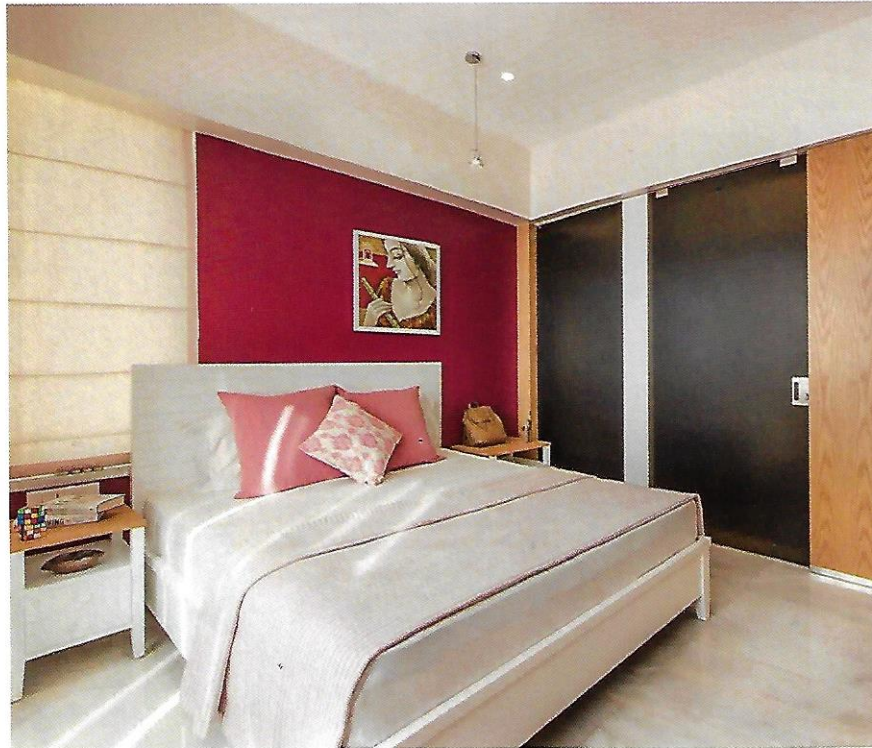
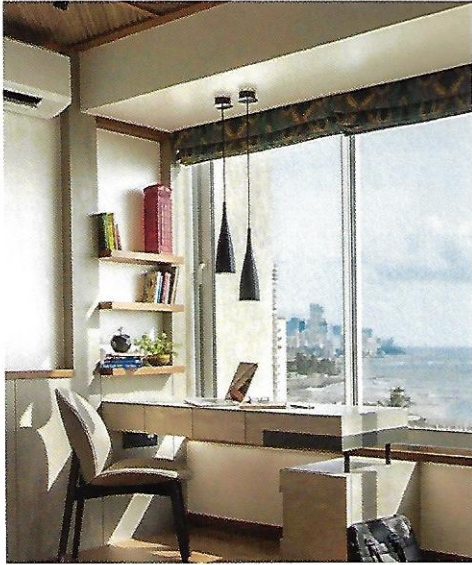
Subtle textural juxtapositions accentuate the sublime connect between the home inside and the world outside. A choice of colours that complement or contrast with the outside skies as the day wears on enhances the ambience. The changing landscapes beyond the windows bridge the spaces with the shades of light and shadows they cast inside, lighting them up with a singular glow. Glass has been introduced between the kitchen and the living space to let this light percolate further into the apartment.

'That Apartment' is a reflection of the users' story, and facilitates the family to keep the memories of their old home alive, while enjoying and creating new memories in their new home.





SMALL APARTMENTS





# STUDIO PKA, Mumbai

**Fact File:**

Project Size: **4,500 Sq.Ft**

Location: **Mumbai, India**

Photographs: **provided by Studio PKA**

The primary design intent for this project with two apartments on the 27th and 28th floors of a high-rise building in a plush Mumbai locality was to conceive it as a single, large duplex home rather than two disparate units. Inhabited by a family spanning three generations, the layout of the home has been strategically worked out to function like a single home; whilst giving each individual a home they can enjoy.

Planned around central core communal spaces that encourage the family to converge and converse during daytime, the home also offers a sense of privacy and independence responding to the unique needs of each generation - as they can individually retreat into their own chambers for refuge at night.

Further, these communal spaces are aligned along the east-west axis providing panoramic views of the city as well as allowing the occupants to enjoy and experience the rising and setting sun. A kaleidoscope of colours fills the home as the day progresses and the seasons change. A neutral palette interspersed with the warmth of wood and accentuated by pops of colour through the art and furniture, gives rise to a sophisticated interior.





Flexibility of spaces, an important feature of all of Studio PKA's home interiors - and the most important factor in cities like Mumbai - continues to be explored even in this very spacious apartment! For instance, sliding doors enable certain spaces to be used as extensions of the day areas, but simultaneously retaining their own unique identity if separated.

While the two apartments are currently connected internally by an elevator, provisions - of space allocation and structural reinforcement - have been made for an internal staircase, keeping in mind future needs.

The dwelling is thus an amalgamation of contrasts, highlighted through its disparate inhabitants, warm hues and the dual functionality of spaces within spaces.



LARGE APARTMENTS

